

Mitophagy Detection Kit



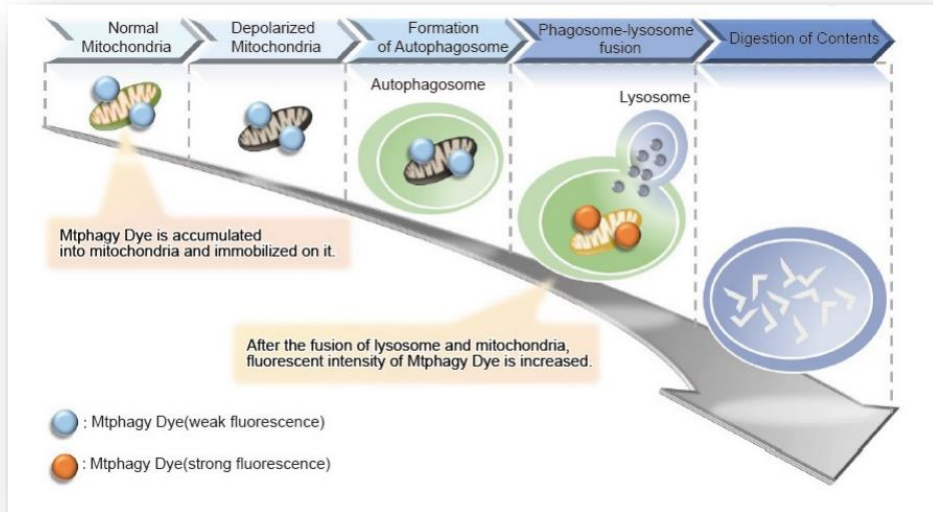
CODE# MD01-10
KIT COMPONENTS

- Mtpagy Dye 1 x 5ug
- Lyso Dye 1 x 30ug

One kit corresponds to 200 tests
when 8-well chamber is used



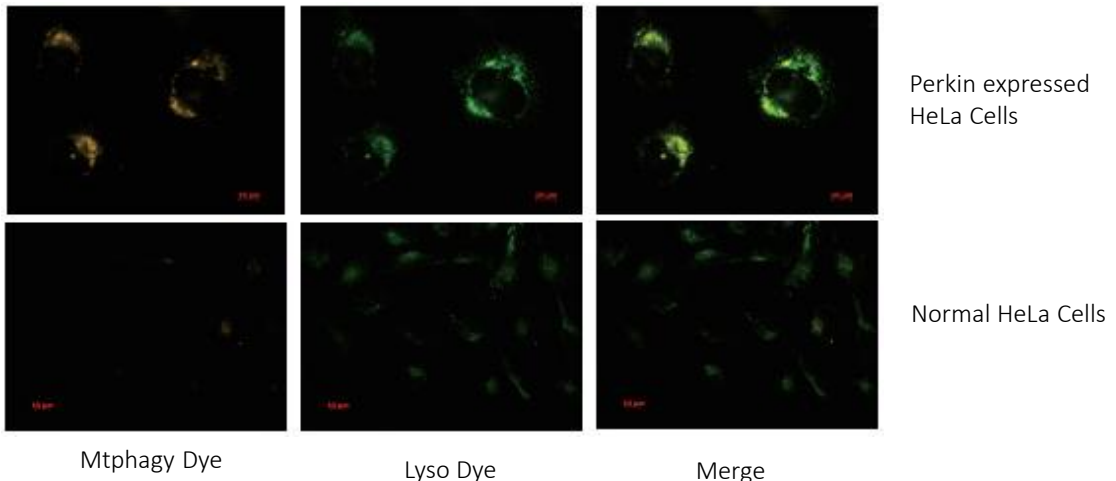
PRINCIPLE



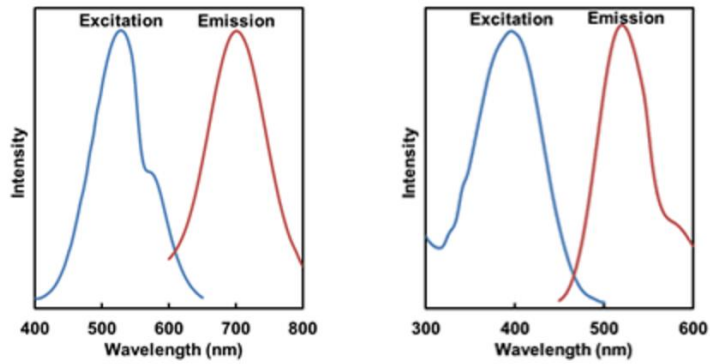
PRODUCT DESCRIPTION

The kit is composed of Mtpagy Dye, a reagent for the detection of mitophagy, and Lyso Dye. Mtpagy Dye is immobilized and accumulated in mitochondria. It exhibits a weak fluorescence depending on the influence of the surrounding conditions. When Mitophagy is induced, the damaged mitochondria fuses with lysosome. After the fusion with lysosome under acidic condition, the fluorescence intensity of Mtpagy Dye increases. To confirm the fusion of Mtpagy Dye-labeled mitochondria and lysosome, Lyso Dye included in this kit can be used. Please note that this kit is not usable for fixed cells.

OBSERVATION OF MITOPHAGY BY MITOPHAGY DETECTION KIT



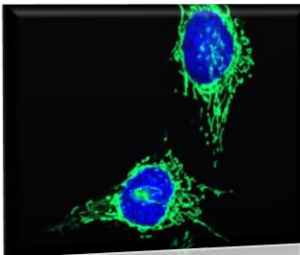
FLUORESCENT PROPERTIES (Mtpagy Dye: left, Lyso Dye: right)



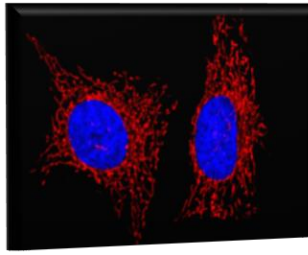
REFERENCES

- 1) J. Koniga, C. Otta, M. Hugoa, T. Junga, A. L. Bulteaub, T. Grunea and A. Hohna, "[Mitochondrial contribution to lipofuscin formation](#)", *Redox Biology*, **2017**, 11, 673.
- 2) K. Kameyama, "[Induction of mitophagy-mediated antitumor activity with folate-appended methyl- \$\beta\$ -cyclodextrin](#)", *International Journal of Nanomedicine*, **2017**, 12, 3433.
- 3) E. F. Fang, T. B. Waltz, H. Kassahun, Q. Lu, J. S. Kerr, M. Morevati, E. M. Fivenson, B. N. Wollman, K. Marosi, M. A. Wilson, W. B. Iser, D. M. Eckley, Y. Zhang, E. Lehrmann, I. G. Goldberg, M. S. Knudsen, M. P. Mattson, H. Nilsen, V. A. Bohr and K. G. Becker, "[Tomatidine enhances lifespan and healthspan in *C. elegans* through mitophagy induction via the SKN-1/Nrf2 pathway](#)", *Scientific Reports*, **2017**, 7, (46208), DOI: 10.1038/srep46208.
- 4) H. Iwashita, S. Torii, N. Nagahora, M. Ishiyama, K. Shioji, K. Sasamoto, S. Shimizu and K. Okuma, "[Live Cell Imaging of Mitochondrial Autophagy with a Novel Fluorescent Small Molecule](#)", *ACS Chem. Biol.*, **2017**, 12, (10), 2546.
- 5) Y. Feng, NB. Madungwe, CV. da Cruz Junho and JC. Bopassa, "[Activation of G protein-coupled oestrogen receptor 1 at the onset of reperfusion protects the myocardium against ischemia/reperfusion injury by reducing mitochondrial dysfunction and mitophagy.](#)", *Br. J. Pharmacol.*, **2017**, 174, (23), 4329.
- 6) K. M. Elamin, K. Motoyama, T. Higashi, Y. Yamashita, A. Tokuda and H. Arima, "[Dual targeting system by supramolecular complex of folate-conjugated methyl- \$\beta\$ -cyclodextrin with adamantane-grafted hyaluronic acid for the treatment of colorectal cancer.](#)", *Int. J. Biol. Macromol.*, **2018**, doi: 10.1016/j.ijbiomac.2018.02.149.

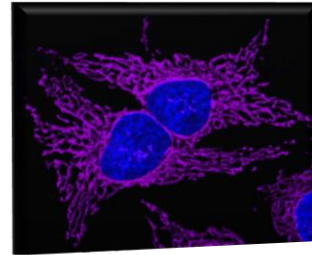
Related Products – MitoBright Series-



MT06-10 MitoBright Green
Unit: 3 x 50ug



MT07-10 MitoBright Red
Unit: 3 x 50ug



MT08-10 MitoBright Deep Red
Unit: 3 x 50ug



EUROPEAN HEADQUARTERS

DOJINDO EU GMBH
Leopoldstr. 254, 80807 Munich, Germany
Phone +49 89 3540-4805
Fax +49 89 3540-4806
email info@dojindo.eu.com

www.dojindo.eu.com

DISTRIBUTED BY