

## General Information

Iron is the most abundant transition metal element within organisms, and it participates in various physiological activities. Recently, free iron in living cells has attracted attention because its high reactivity may be related to cellular damage or death. Free iron exists in its stable redox states, namely ferrous ion ( $\text{Fe}^{2+}$ ) and ferric ion ( $\text{Fe}^{3+}$ ). In living cells, understanding the behavior of  $\text{Fe}^{2+}$  is considered more important than understanding that of  $\text{Fe}^{3+}$  because of the intracellular reductive environment, metal transporters, and the water solubility of  $\text{Fe}^{2+}$ . FerroOrange is a novel fluorescent probe that enables live-cell fluorescent imaging of intracellular  $\text{Fe}^{2+}$ .

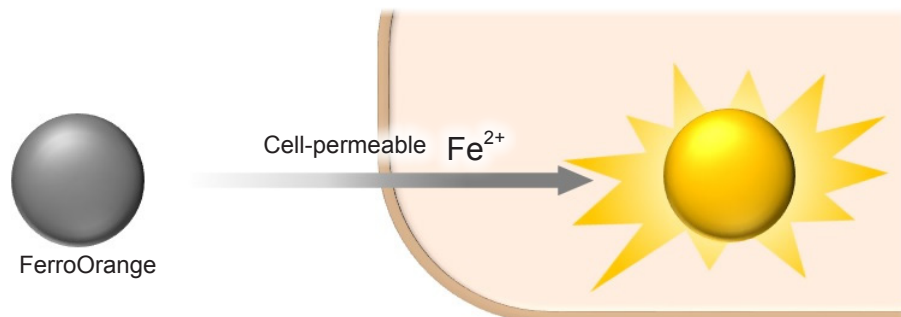


Figure 1. Detection of intracellular  $\text{Fe}^{2+}$  using FerroOrange

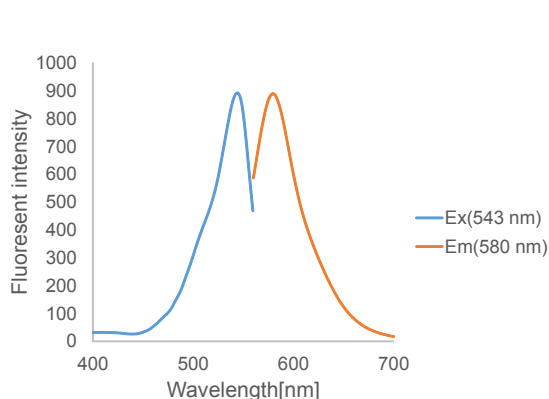


Figure 2. Excitation and emission spectra of FerroOrange

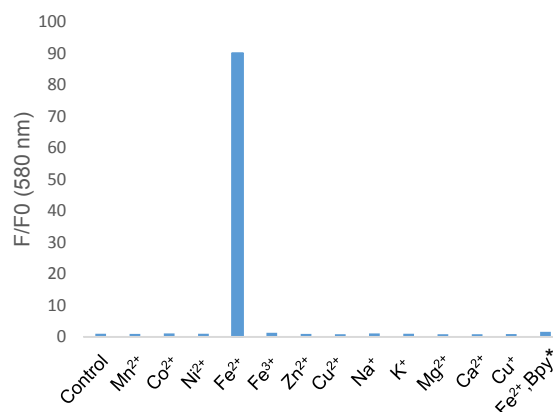


Figure 3. Metal ion selectivity of FerroOrange  
\*Bpy; 2,2'-Bipyridyl

## Contents

	1 tube	3 tubes
FerroOrange	24 $\mu\text{g}$ x 1	24 $\mu\text{g}$ x 3

## Storage Condition

Store at 0–5 °C and protect from light.

## Required Equipment and Materials

- Dimethyl sulfoxide (DMSO), Dimethylformamide (DMF), or Ethanol
- HBSS
- Serum-free medium
- Micropipettes

## Preparation of the Solution

### Preparation of FerroOrange working solution

Add 35  $\mu\text{L}$  of DMSO to a tube containing 24  $\mu\text{g}$  of FerroOrange and dissolve the solution via pipetting to prepare a 1 mmol/L FerroOrange solution. Dilute the 1mmol/L FerroOrange solution with HBSS to prepare the 1  $\mu\text{mol/L}$  FerroOrange working solution.

※ DMF or ethanol can also be used alternatively to DMSO for preparation. To protect from light, keep this solution in the aluminium bag and store at -20°C. The 1 mmol/L FerroOrange solution is stable for 1 month under this condition. The 1  $\mu\text{mol/L}$  FerroOrange working solution is unstable. Please prepare the solutions immediately before staining the experiment and use them immediately.

※ Substitute serum-free medium for HBSS if needed. However, please note that serum-containing medium cannot be used because it causes high background.

## General Protocol

1. Seed cells on a dish for fluorescent imaging and culture them overnight in a 37°C incubator equilibrated with 95% air and 5%  $\text{CO}_2$ .
2. Discard the supernatant and wash the cells with HBSS or serum-free medium three times.
3. Add medium containing stimulating agents and incubate the cells in a 37°C incubator equilibrated with 95% air and 5%  $\text{CO}_2$ .  
 ※ Please optimize the incubation time according to the stimulation conditions.
4. Discard the supernatant and wash the cells with HBSS or serum-free medium three times.
5. Add the 1  $\mu\text{mol/L}$  FerroOrange working solution to the cells and incubate them in a 37°C incubator equilibrated with 95% air and 5%  $\text{CO}_2$ .  
 ※ Please stain the cells with FerroOrange immediately before observation, and do not wash them.
6. Observe the cells under a fluorescence microscope.

Experimental  
Example 1

Detection of intracellular  $\text{Fe}^{2+}$  in HeLa cells using FerroOrange.

1. HeLa cells ( $2.0 \times 10^4$  cells/well) were seeded on a  $\mu$ -slide 8 well (ibidi) and cultured overnight in a  $37^\circ\text{C}$  incubator equilibrated with 95% air and 5%  $\text{CO}_2$ .
2. The cells were washed with serum-free medium (200  $\mu\text{L}$ ) three times. Then, serum-free medium (200  $\mu\text{L}$ ) was added to the cells.
3. Ammonium iron (II) sulfate (10 mmol/L) was prepared with purified water.
4. Ammonium iron (II) sulfate (2  $\mu\text{L}$ ) was added to wells (The final concentration: 100  $\mu\text{mol/L}$ ). To mix Ammonium iron (II) sulfate and serum-free medium, the entire medium was pipetted up from wells and then immediately pipetted back one time.

\*Please do not disturb the cells during pipetting.

\*When adding 10 mmol/L Ammonium iron (II) sulfate to well, please exactly follow step 4 as described. Do not add pre-prepared 100  $\mu\text{mol/L}$  Ammonium iron (II) sulfate to cells. It may result in precipitation of Ammonium iron (II) sulfate during the experiment due to a vortex or a pipetting.

5. The cells were incubated for 30 min in a  $37^\circ\text{C}$  incubator equilibrated with 95% air and 5%  $\text{CO}_2$ , and the cells were washed with HBSS (200  $\mu\text{L}$ ) three times.
6. FerroOrange (1  $\mu\text{mol/L}$ ) and 2,2'-bipyridyl (Bpy) (100  $\mu\text{mol/L}$ ) were added to the cells as HBSS solution (200  $\mu\text{L}$ ), and then cells were incubated for 30 min in a  $37^\circ\text{C}$  incubator equilibrated with 95% air and 5%  $\text{CO}_2$ .
7. The cells were observed under a confocal fluorescence microscope.

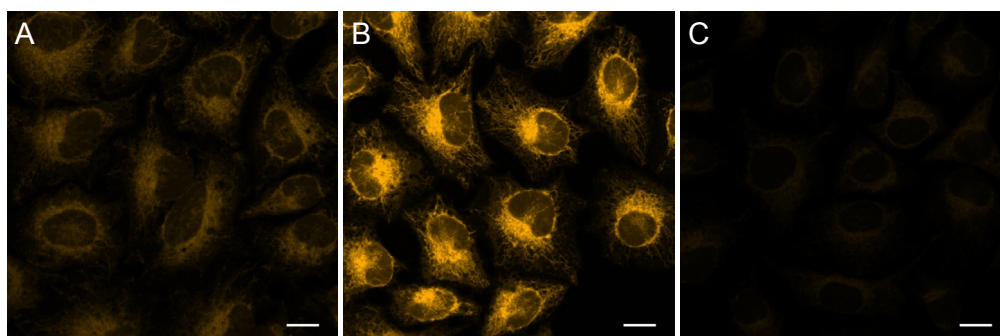


Figure 4. Detection of intracellular  $\text{Fe}^{2+}$  in HeLa cells using FerroOrange.

Ex/Em = 561 nm/ 570-620 nm

A Control

B Ammonium iron(II) sulfate treated

C Ammonium iron(II) sulfate and 2,2'-Bipyridyl (Bpy) treated

Scale bars 20  $\mu\text{m}$

The fluorescence intensity of FerroOrange was increased in HeLa cells treated with Ammonium iron(II) sulfate compared with the findings in untreated cells; conversely, its fluorescence intensity was decreased in cells treated with Bpy. Therefore, FerroOrange reacted with intracellular  $\text{Fe}^{2+}$ .

Experimental  
Example 2

Detection of intracellular  $\text{Fe}^{2+}$  in HeLa cells using FerroOrange.

1. HeLa cells ( $2.0 \times 10^4$  cells/well) were seeded on a  $\mu$ -slide 8 well (ibidi) and cultured overnight in a  $37^\circ\text{C}$  incubator equilibrated with 95% air and 5%  $\text{CO}_2$ .
2. The cells were washed with HBSS (200  $\mu\text{L}$ ) three times.
3. FerroOrange (1  $\mu\text{mol/L}$ ) and Bpy (100  $\mu\text{mol/L}$ ) were added to the cells as HBSS solution (200  $\mu\text{L}$ ), and the cells were incubated for 30 min in a  $37^\circ\text{C}$  incubator equilibrated with 95% air and 5%  $\text{CO}_2$ .
4. The cells were observed under a confocal fluorescence microscope.

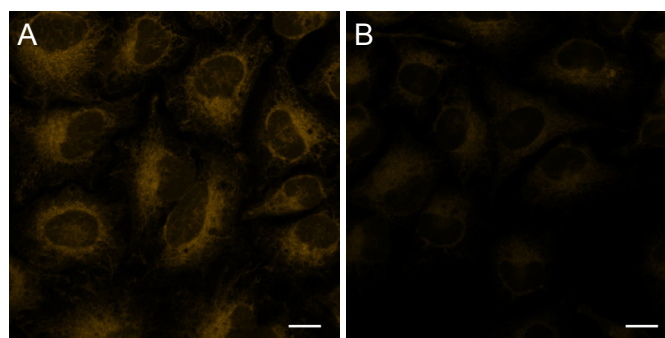


Figure 5. Detection of intracellular  $\text{Fe}^{2+}$  in HeLa cells using FerroOrange.

Ex/Em = 561 nm/ 570-620 nm

A Control

B 2,2'-Bipyridyl (Bpy) treated

Scale bars 20  $\mu\text{m}$

The fluorescence intensity of FerroOrange was decreased in HeLa cells treated with Bpy compared with that in untreated cells. Therefore, FerroOrange reacted with intracellular  $\text{Fe}^{2+}$ .

This product was commercialized under the advisory of Dr. Hideko Nagasawa and Dr. Tasuku Hirayama (Gifu Pharmaceutical University).

If you need more information, please contact Dojindo technical service.

Dojindo Laboratories

2025-5 Tabaru, Mashiki-machi, Kamimashiki-gun, Kumamoto  
861-2202, Japan Phone: +81-96-286-1515 Fax: +81-96-286-1525  
E-mail: info@dojindo.co.jp Web: www.dojindo.co.jp

Dojindo Molecular Technologies, Inc.

Tel: +1-301-987-2667 Web: http://www.dojindo.com/

Dojindo EU GmbH

Tel: +49-89-3540-4805 Web: http://www.dojindo.eu.com/

Dojindo China Co., Ltd

Tel: +86-21-6427-2302 Web: http://www.dojindo.cn/