

Nucleolus Bright Green

Nucleolus Bright Red

Technical Manual

Technical Manual (Japanese version) is available at <http://www.dojindo.co.jp/manual/n511, n512.pdf>

General Information

A Nucleolus is one of the structures forming a nucleus and becoming the starting point of the ribosomal biogenesis. There are many ribosomal RNA (rRNA) in the nucleolus and transcription of rRNA and processing are carried out. Whereas the morphological change of nucleolus is known as one of the indicator of cancer diagnosis, there has been some scientific reports describing the relation between nucleolus and DNA damage¹⁾, autophagy²⁾, virus infection³⁾, and cellular senescence^{4), 5)}. Nucleolus Bright dyes are small molecules and they bind to RNA in the nucleolus to emit fluorescence. The nucleolus can be observed without any washing steps after staining with Nucleolus Bright dyes.

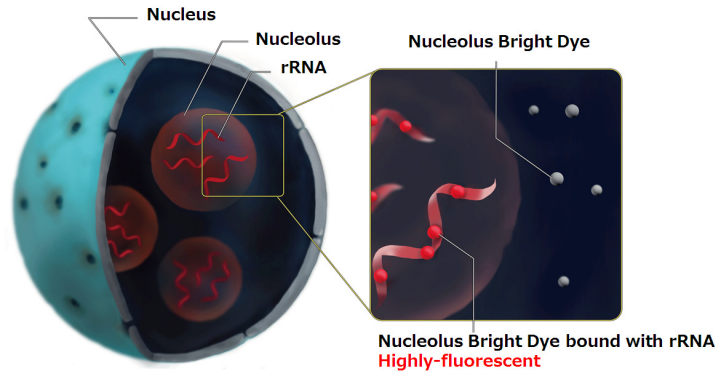


Figure 1. Staining system of Nucleolus Bright

Contents

N511 Nucleolus Bright Green 60 nmol x 1

N512 Nucleolus Bright Red 60 nmol x 1

*Equivalent to 30 tests when 35 mm dish is used. (final concentration of each dye: 1 μmol/l)

Storage Condition

N511 Store in a cool and dark place, protect from light.

N512 Store in a cool and dark place.

Required Equipment and Materials

- Dimethyl sulfoxide (DMSO)

- PBS

- Micropipettes

Fluorescent property

Fluorescent property of Nucleolus Bright

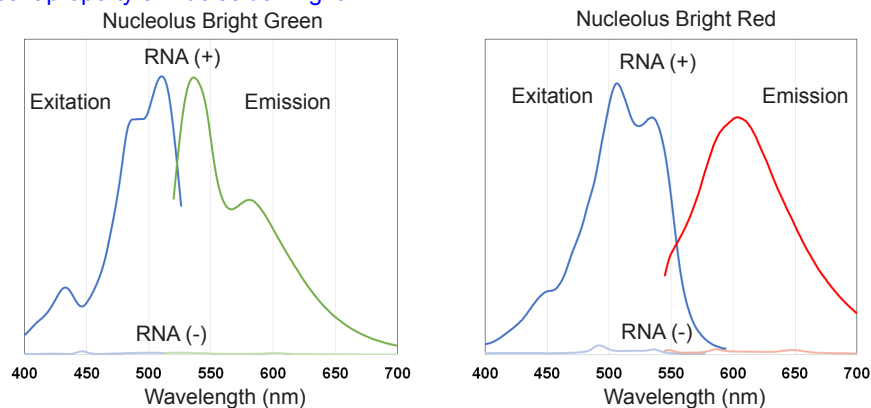


Figure 2. Excitation and emission spectra of Nucleolus Bright Green and Red

Preparation of Solutions

Preparation of 1 mmol/l of Nucleolus Bright DMSO stock solution

Add 60 μl of DMSO to a tube of Nucleolus Bright and dissolve by pipetting.

*Store the DMSO stock solution at -20 °C. The DMSO stock solution is stable at -20 °C for 1 month.

Preparation of Nucleolus Bright working solution

Dilute the DMSO stock solution with PBS to prepare 0.5–5 μmol/l working solution.

*Use the working solution within the same day of preparation.

General protocol

Nucleolus Bright staining

1. Seed cells on a dish for assay. Culture the cells at 37 °C overnight in a 5% CO₂ incubator.
2. Remove the culture medium and fix the cells by adding 4% paraformaldehyde (PFA) /PBS solution or cool methanol to each well and incubate at room temperature.
*Incubation time 4% PFA: 5 minutes, cool methanol: 1 minute
3. Remove the supernatant and wash the cells with PBS three times.
4. Add 1% Triton X-100/PBS solution to each well and incubate at room temperature for 20 minutes.
5. Remove the supernatant and wash the cells with PBS three times.
6. Add Nucleolus Bright working solution and incubate at room temperature for 5 minutes.
7. Observe the sample under a fluorescence microscope.

Fluorescence imaging of nucleoli in HeLa cells

1. HeLa cells were seeded on a μ -slide 8 well plate and cultured at 37 °C overnight in a 5% CO₂ incubator.
2. After the culture medium was removed, 4% PFA/PBS solution or cool methanol was added to each well and the plate was incubated at room temperature.
*Incubation time, 4% PFA: 5 minutes, cool methanol: 1 minute.
3. The supernatant was removed and the cells were washed with PBS three times.
4. To permeabilize the nuclear membrane, 1% Triton X-100/PBS solution was added to each wells and incubated at room temperature for 20 minutes.
5. The supernatant was removed and the cells were washed with PBS three times.
6. The mixture of Nucleolus Bright working solution and DAPI solution (200 μ l) was added and the cells was incubated at room temperature for 5 minutes.
7. The cells were observed under a fluorescence microscope.

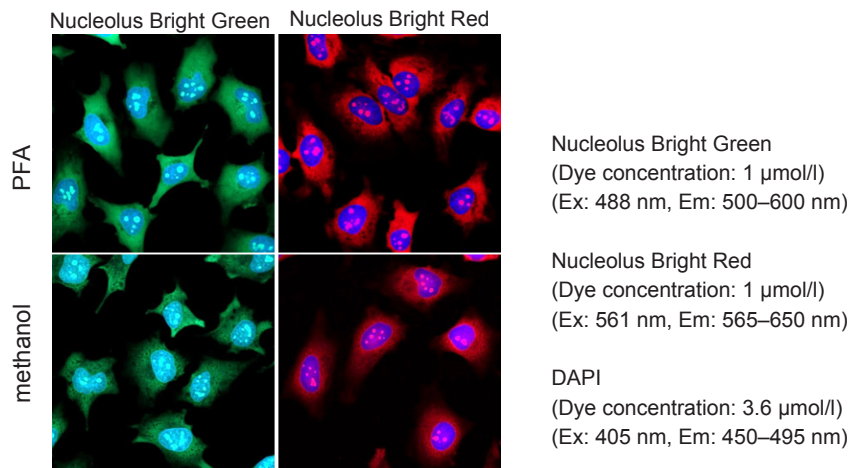


Figure 3. Fluorescence imaging of nucleoli in HeLa cells
(green: Nucleolus Bright Green, red: Nucleolus Bright Red, blue: DAPI)

Morphological change of nucleoli depending on cellular senescence

1. WI-38 cells (5×10^4 cells/dish, MEM, 10% fetal bovine serum, 1% penicillin-streptomycin) of different passage number were seeded on a μ -slide 8 well plate and cultured at 37 °C overnight in a 5% CO₂ incubator.
2. After the culture medium was removed, 4% PFA/PBS solution was added to each well and the plate was incubated at room temperature for 5 minutes.
3. The supernatant was removed and the cells were washed with PBS three times.
4. To permeabilize the nuclear membrane, 1% Triton X-100/PBS solution was added to each wells and incubated at room temperature for 20 minutes.
5. The supernatant was removed and the cells were washed with PBS three times.
6. The mixture solution of Nucleolus Bright working solution and DAPI solution (200 μ l) was added and the cells was incubated at room temperature for 5 minutes.
7. The cells were observed under a fluorescence microscope.

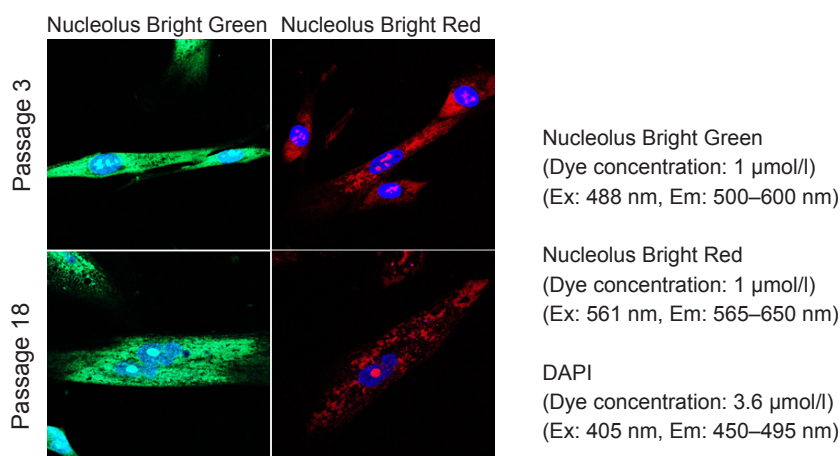


Figure 4. Morphological change of nucleoli depending on cellular senescence in WI-38 cells
(green: Nucleolus Bright Green, red: Nucleolus Bright Red, blue: DAPI)

Reference

- 1) Greenberg, R. A. et al., *Cell Reports*, **2015**, *13*, 251–259.
- 2) Kimura, K. et al., *Scientific Reports*, **2015**, *5*, 8903.
- 3) Hiscox, J. A. et al., *Cellular Microbiology*, **2006**, *8*, 1147–1157.
- 4) Nakao, M. et al., *Cell Reports*, **2017**, *18*, 2148–2161.
- 5) Antebi, A. et al., *Trends in Cell Biology*, DOI: 10.1016/j.tcb.2018.03.007.

This product was developed under the advisory of Dr. Mitsuyoshi Nakao (Kumamoto University).

If you need more information, please contact Dojindo technical service.

Dojindo Laboratories

2025-5 Tabaru, Mashiki-machi, Kamimashiki-gun, Kumamoto
861-2202, Japan Phone: +81-96-286-1515 Fax: +81-96-286-1525
E-mail: info@dojindo.co.jp Web: www.dojindo.co.jp

Dojindo Molecular Technologies, Inc.

Tel: +1-301-987-2667 Web: <http://www.dojindo.com/>

Dojindo EU GmbH

Tel: +49-89-3540-4805 Web: <http://www.dojindo.eu.com/>

Dojindo China Co., Ltd

Tel: +86-21-6427-2302 Web: <http://www.dojindo.cn/>